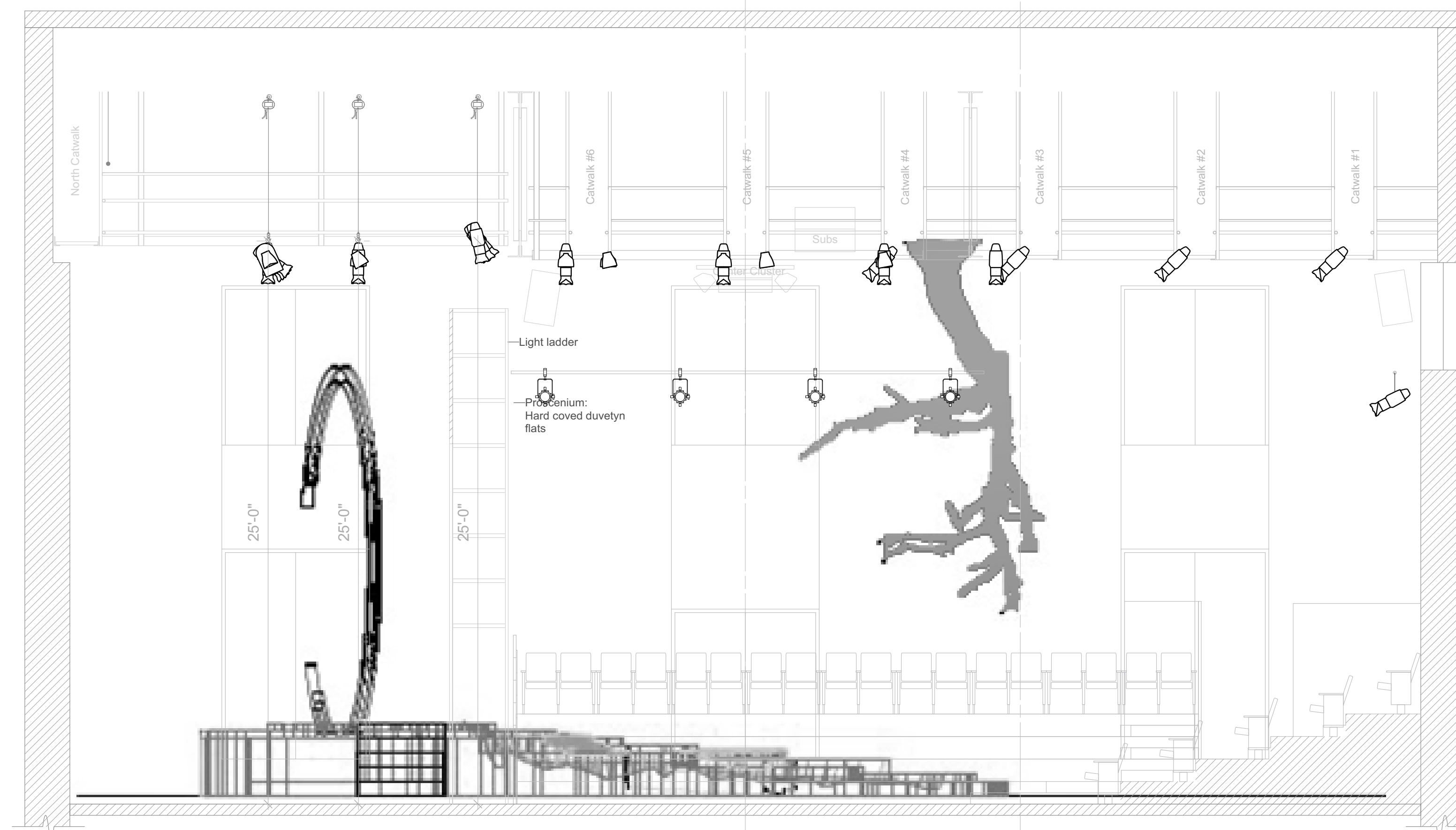


FRONT ELEVATION VIEW



SECTION VIEW  
FACING STAGE LEFT

INSTRUMENT KEY

- ETC Source4 190sq
- ETC Source4 200sq
- ETC Source4 300sq
- ETC Source4 500sq
- Strand 6in Fies
- Altman PAR 64 MFL
- ETC CE Source4 PAR MCM (MFL)
- ETC ColorSource PAR Medium Oval
- ETC ColorSource PAR Wide Oval
- High End SoloSpot Pro CMF
- High End Systems Solo Wash LED 37
- Label Legend Key
- Accessory
- Unit Number
- 100 Unit

NOTES

- Instruments without dimension labels are to be hung 18" apart
- Fog machine position is still being discussed
- Equipment requests are pending approval
- LED tape drafting is not to scale. LED tape is to be installed in existing channels within the set.

THE UNIVERSITY OF TEXAS AT AUSTIN  
**TEXAS THEATRE & DANCE**  
 300 E. 23RD STREET  
 AUSTIN, TX 78712  
 Oscar Brockett Theatre

PRESENTS

**12 OPHELIAS**

Playwright \_\_\_\_\_ Caridad Svich  
 Director \_\_\_\_\_ Jess Shoemaker  
 Scenic Design \_\_\_\_\_ Chris Conard  
 Costume Design \_\_\_\_\_ Delena Bradley  
 Sound Design \_\_\_\_\_ Carolina Perez  
 Projection Design \_\_\_\_\_ Chris Conard

THIS DRAWING REPRESENTS VISUAL CONCEPTS AND CONSTRUCTION SUGGESTIONS ONLY. THE LIGHTING DESIGNER IS UNQUALIFIED TO DETERMINE THE ELECTRICAL OR STRUCTURAL APPROPRIATENESS OF THE DESIGN AND WILL NOT ASSUME RESPONSIBILITY FOR IMPROPER ENGINEERING, CONSTRUCTION, OR USE. ALL MATERIALS AND CONSTRUCTION MUST MEET THE MOST STRINGENT LOCAL SAFETY AND FIRE CODES.

**Kendra S. Wiley**  
 Lighting Designer  
 kendra.suzanne.wiley@gmail.com  
 706-714-5590  
 kendrawiley.com

SCALE:	1/4"=1'-0"	PLATE
DRAWN BY:	Kendra S. Wiley	
CREATED:	04-27-19	
REVISED:	04-27-19	
FILE:	120 PRELIM PLOT.vwx	OF 3

**Section View**